

**SOONER INVESTMENT**  
*Commercial & Investment Real Estate*

**WESTSIDE COMMERCE**  
**OKLAHOMA CITY, OK**  
**50+ ACRES ZONED URBAN COMMERCIAL**

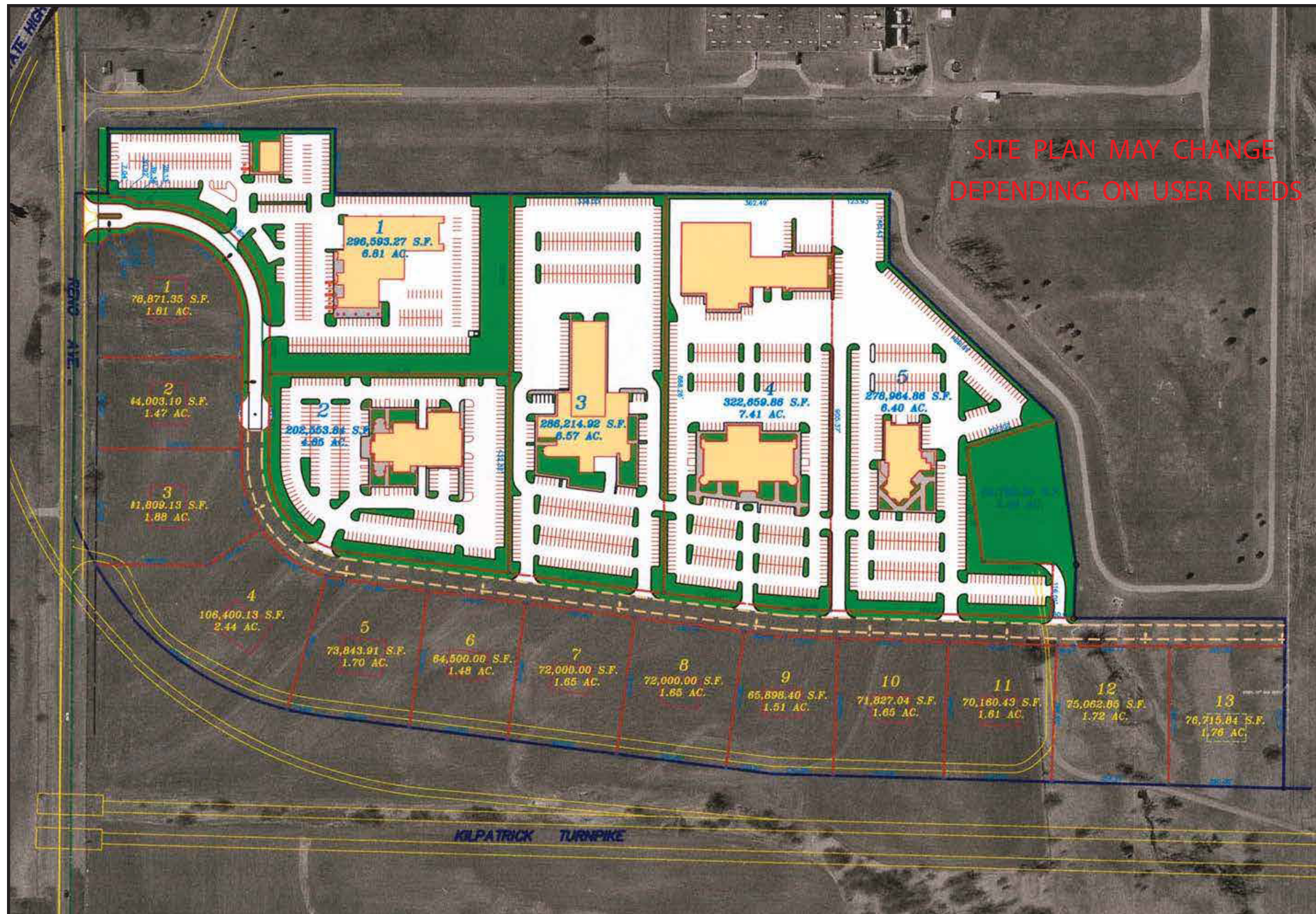
**FOR MORE INFORMATION, PLEASE CONTACT US AT:**  
 (405) 602-6400  
 bgoodwin@soonerinvestment.com  
 www.soonerinvestment.com



**SOONER INVESTMENT**  
*Commercial & Investment Real Estate*

**WESTSIDE COMMERCE**  
 OKLAHOMA CITY, OK  
 50+ ACRES ZONED URBAN COMMERCIAL

FOR MORE INFORMATION, PLEASE CONTACT US AT:  
 (405) 602-6400  
 bgoodwin@soonerinvestment.com  
 www.soonerinvestment.com



SITE PLAN MAY CHANGE  
DEPENDING ON USER NEEDS

**SOONER INVESTMENT**  
*Commercial & Investment Real Estate*

**WESTSIDE COMMERCE**  
OKLAHOMA CITY, OK  
50+ ACRES ZONED URBAN COMMERCIAL

FOR MORE INFORMATION, PLEASE CONTACT US AT:  
(405) 602-6400  
bgoodwin@soonerinvestment.com  
www.soonerinvestment.com

# FULL PROFILE

2000-2010 Census, 2012 Estimates with 2017 Projections

Calculated using Proportional Block Groups

**SOONER INVESTMENT**  
Commercial & Investment Real Estate

Lat/Lon: 35.4620/-97.7114

RF1

I-40 W & John Kilpatrick Tpke		3 mi radius	5 mi radius
POPULATION	2012 Estimated Population	39,680	88,985
	2017 Projected Population	45,701	100,277
	2010 Census Population	36,968	83,896
	2000 Census Population	26,789	69,170
	Projected Annual Growth 2012 to 2017	3.0%	2.5%
	Historical Annual Growth 2000 to 2012	4.0%	2.4%
HOUSEHOLDS	2012 Estimated Households	14,725	34,203
	2017 Projected Households	16,812	38,420
	2010 Census Households	13,780	32,267
	2000 Census Households	9,557	26,388
	Projected Annual Growth 2012 to 2017	2.8%	2.5%
	Historical Annual Growth 2000 to 2012	4.5%	2.5%
AGE	2012 Est. Population Under 10 Years	15.5%	15.4%
	2012 Est. Population 10 to 19 Years	14.0%	14.1%
	2012 Est. Population 20 to 29 Years	13.0%	12.5%
	2012 Est. Population 30 to 44 Years	21.4%	20.6%
	2012 Est. Population 45 to 59 Years	19.8%	19.8%
	2012 Est. Population 60 to 74 Years	11.6%	12.4%
	2012 Est. Population 75 Years or Over	4.5%	5.3%
	2012 Est. Median Age	34.7	35.4
MARITAL STATUS & GENDER	2012 Est. Male Population	48.8%	48.6%
	2012 Est. Female Population	51.2%	51.4%
	2012 Est. Never Married	23.2%	25.2%
	2012 Est. Now Married	59.9%	58.0%
	2012 Est. Separated or Divorced	14.2%	14.4%
	2012 Est. Widowed	2.7%	2.4%
INCOME	2012 Est. HH Income \$200,000 or More	3.3%	3.5%
	2012 Est. HH Income \$150,000 to \$199,999	2.8%	2.5%
	2012 Est. HH Income \$100,000 to \$149,999	16.1%	12.8%
	2012 Est. HH Income \$75,000 to \$99,999	17.2%	14.3%
	2012 Est. HH Income \$50,000 to \$74,999	26.3%	24.7%
	2012 Est. HH Income \$35,000 to \$49,999	14.2%	14.8%
	2012 Est. HH Income \$25,000 to \$34,999	6.7%	9.3%
	2012 Est. HH Income \$15,000 to \$24,999	8.3%	10.2%
	2012 Est. HH Income Under \$15,000	5.1%	8.0%
	2012 Est. Average Household Income	\$73,112	\$68,540
	2012 Est. Median Household Income	\$66,331	\$58,575
	2012 Est. Per Capita Income	\$27,360	\$26,519
	2012 Est. Total Businesses	807	2,778
2012 Est. Total Employees	13,252	35,551	

This report was produced using data from private and government sources deemed to be reliable. The information herein is provided without representation or warranty.

# FULL PROFILE

2000-2010 Census, 2012 Estimates with 2017 Projections

Calculated using Proportional Block Groups

**SOONER INVESTMENT**  
Commercial & Investment Real Estate

Lat/Lon: 35.4620/-97.7114

RF1

## I-40 W & John Kilpatrick Tpke

		3 mi radius	5 mi radius
<b>RACE</b>	2012 Est. White	78.5%	77.4%
	2012 Est. Black	3.0%	5.1%
	2012 Est. Asian or Pacific Islander	6.5%	4.6%
	2012 Est. American Indian or Alaska Native	4.8%	4.7%
	2012 Est. Other Races	7.1%	8.1%
<b>HISPANIC</b>	2012 Est. Hispanic Population	2,774	7,457
	2012 Est. Hispanic Population	7.0%	8.4%
	2017 Proj. Hispanic Population	7.7%	9.4%
	2010 Hispanic Population	6.6%	7.8%
<b>EDUCATION (Adults 25 or Older)</b>	2012 Est. Adult Population (25 Years or Over)	25,626	57,564
	2012 Est. Elementary (Grade Level 0 to 8)	2.5%	2.5%
	2012 Est. Some High School (Grade Level 9 to 11)	6.2%	8.0%
	2012 Est. High School Graduate	28.5%	28.2%
	2012 Est. Some College	27.7%	29.0%
	2012 Est. Associate Degree Only	7.8%	7.1%
	2012 Est. Bachelor Degree Only	20.6%	18.9%
	2012 Est. Graduate Degree	6.8%	6.3%
<b>HOUSING</b>	2012 Est. Total Housing Units	15,422	36,663
	2012 Est. Owner-Occupied	71.8%	64.8%
	2012 Est. Renter-Occupied	23.7%	28.5%
	2012 Est. Vacant Housing	4.5%	6.7%
<b>HOMES BUILT BY YEAR</b>	2010 Homes Built 2005 or later	14.2%	11.3%
	2010 Homes Built 2000 to 2004	14.0%	10.8%
	2010 Homes Built 1990 to 1999	14.7%	11.5%
	2010 Homes Built 1980 to 1989	23.7%	19.2%
	2010 Homes Built 1970 to 1979	18.8%	19.7%
	2010 Homes Built 1960 to 1969	6.4%	15.5%
	2010 Homes Built 1950 to 1959	3.9%	6.3%
	2010 Homes Built Before 1949	4.4%	5.7%
<b>HOME VALUES</b>	2010 Home Value \$1,000,000 or More	0.2%	0.3%
	2010 Home Value \$500,000 to \$999,999	1.8%	1.6%
	2010 Home Value \$400,000 to \$499,999	1.1%	1.1%
	2010 Home Value \$300,000 to \$399,999	3.7%	3.5%
	2010 Home Value \$200,000 to \$299,999	10.7%	11.0%
	2010 Home Value \$150,000 to \$199,999	16.1%	16.1%
	2010 Home Value \$100,000 to \$149,999	41.8%	38.3%
	2010 Home Value \$50,000 to \$99,999	15.9%	20.5%
	2010 Home Value \$25,000 to \$49,999	4.6%	3.6%
	2010 Home Value Under \$25,000	4.1%	4.0%
	2010 Median Home Value	\$134,999	\$133,012
	2010 Median Rent	\$773	\$625

This report was produced using data from private and government sources deemed to be reliable. The information herein is provided without representation or warranty.

# FULL PROFILE

2000-2010 Census, 2012 Estimates with 2017 Projections

Calculated using Proportional Block Groups

**SOONER INVESTMENT**  
Commercial & Investment Real Estate

Lat/Lon: 35.4620/-97.7114

RF1

## I-40 W & John Kilpatrick Tpke

3 mi radius 5 mi radius

		3 mi radius	5 mi radius
<b>LABOR FORCE</b>	2012 Est. Labor Population Age 16 Years or Over	30,014	67,628
	2012 Est. Civilian Employed	68.0%	65.2%
	2012 Est. Civilian Unemployed	4.1%	3.9%
	2012 Est. in Armed Forces	0.8%	0.5%
	2012 Est. not in Labor Force	27.1%	30.3%
	2012 Labor Force Males	48.3%	47.9%
	2012 Labor Force Females	51.7%	52.1%
<b>OCCUPATION</b>	2010 Occupation: Population Age 16 Years or Over	18,710	41,004
	2010 Mgmt, Business, & Financial Operations	13.8%	13.8%
	2010 Professional, Related	22.5%	21.3%
	2010 Service	15.5%	15.9%
	2010 Sales, Office	28.7%	29.0%
	2010 Farming, Fishing, Forestry	0.2%	0.2%
	2010 Construction, Extraction, Maintenance	8.1%	9.0%
	2010 Production, Transport, Material Moving	11.3%	10.9%
	2010 White Collar Workers	64.9%	64.0%
	2010 Blue Collar Workers	35.1%	36.0%
<b>TRANSPORTATION TO WORK</b>	2010 Drive to Work Alone	85.3%	84.7%
	2010 Drive to Work in Carpool	9.5%	9.9%
	2010 Travel to Work by Public Transportation	0.3%	0.3%
	2010 Drive to Work on Motorcycle	0.3%	0.3%
	2010 Walk or Bicycle to Work	0.7%	1.2%
	2010 Other Means	0.2%	0.3%
	2010 Work at Home	3.7%	3.3%
<b>TRAVEL TIME</b>	2010 Travel to Work in 14 Minutes or Less	25.8%	28.2%
	2010 Travel to Work in 15 to 29 Minutes	51.0%	48.5%
	2010 Travel to Work in 30 to 59 Minutes	20.4%	20.6%
	2010 Travel to Work in 60 Minutes or More	2.8%	2.8%
	2010 Average Travel Time to Work	19.8	19.7
<b>CONSUMER EXPENDITURE</b>	2012 Est. Total Household Expenditure	\$831 M	\$1.84 B
	2012 Est. Apparel	\$39.6 M	\$88.0 M
	2012 Est. Contributions, Gifts	\$52.4 M	\$116 M
	2012 Est. Education, Reading	\$22.4 M	\$49.2 M
	2012 Est. Entertainment	\$46.7 M	\$103 M
	2012 Est. Food, Beverages, Tobacco	\$132 M	\$295 M
	2012 Est. Furnishings, Equipment	\$37.3 M	\$81.6 M
	2012 Est. Health Care, Insurance	\$58.7 M	\$132 M
	2012 Est. Household Operations, Shelter, Utilities	\$247 M	\$549 M
	2012 Est. Miscellaneous Expenses	\$13.9 M	\$30.9 M
	2012 Est. Personal Care	\$12.0 M	\$26.7 M
	2012 Est. Transportation	\$169 M	\$374 M

This report was produced using data from private and government sources deemed to be reliable. The information herein is provided without representation or warranty.